

The Aerial Acoustics Model 20T V2 embodies the sum of what we have learned about loudspeaker design. Every detail has been thoroughly considered, every design decision justified. The result is a remarkable loudspeaker system that faithfully reveals the spirit of music and film and stands as the benchmark for all Aerial designs. The Model 20T V2 produces an astonishingly vivid, forthright, and wonderfully full-range sound with a lifelike quality that is startlingly real. Impeccably finished in high gloss paint or in mirror-imaged premium veneers, it is ideally suited for those who treasure music and movies and enjoy the richness of faithfully reproducing those experiences at home.

V2 represents the second generation of our flagship Model 20T design and incorporates several significant technical advancements. Newly designed long linear excursion woofers feature 3-layer cones consisting of a German Rohacell® core sandwiched between carbon fiber and glass fiber surfaces, thus providing an optimum combination of stiffness, damping, and mass. Aerial designed and handcrafted in Denmark by our manufacturing partner ScanSpeak®, these proprietary drivers deliver astonishingly powerful, exceptionally firm

and extended bass. New crossover networks masterfully integrate the system's drivers so that upon listening, the loudspeaker seems utterly transparent.

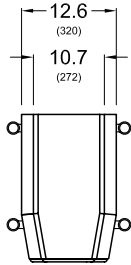
With a strikingly evident degree of naturalness, the Model 20T V2 effortlessly reveals musical and acoustical details that normally remain hidden within recordings. This extraordinary sense of realism is not the result of a single factor, but of the relentless refinement of myriad design details combined into a cohesive, seamless whole. The Model 20T V2 is at once capable of extreme resolution, exceptional frequency extension, unerring tonal accuracy, and vast dynamics.

All Aerial loudspeaker systems are designed and constructed with fanatical attention to quality and detail. Decades of design and manufacturing experience have taught us that craftsmanship and technology go hand-in-hand when creating products of uncompromising performance and genuine long-term value. World class manufacturing techniques and production equipment are employed, complemented by the work of skilled craftsmen when only experienced hands will do.

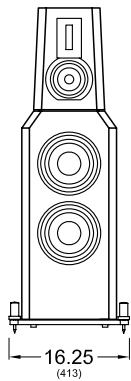
The new Model 20T V2.  
A true modern reference.



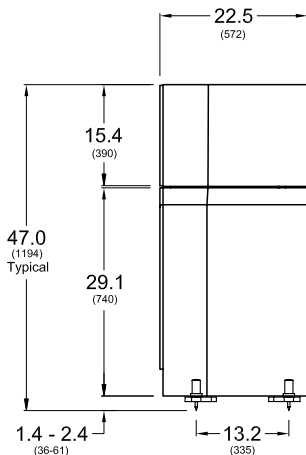
Top View



Front View



Side View



### Model 20T V2

<b>Frequency Response</b>	25 Hz to 35 kHz $\pm$ 2 dB. -8 dB at 22 Hz and 40 kHz
<b>Sensitivity</b>	90 dB at 2.83 V <sub>rms</sub> and 1.0 meter on axis
<b>Impedance</b>	4 $\Omega$ nominal, 2.8 $\Omega$ minimum, low reactance
<b>Power Requirements</b>	50 to 800 watts (8 $\Omega$ rating) recommended
<b>Woofers</b>	Two 8.9" (225 mm) cast magnesium alloy frame drivers Rohacell® core cones with carbon & glass fiber surfaces Massive vented magnet structures 2.0" (51 mm) diameter ultra-linear long-stroke coils
<b>Midrange</b>	7.1" (180 mm) cast magnesium alloy frame driver Carbon filament reinforced damped composite cone Large magnet structure with vented machined pole piece 1.6" (40 mm) diameter linear stroke coil
<b>Tweeter</b>	4.1" (105 mm) 5 micron pure aluminum ribbon Precision cast aluminum waveguide Massive ultra-high Gauss neodymium magnet structure High-power self-aligning diaphragm Acoustically damped tapered rear chamber
<b>Crossover</b>	300 Hz and 3.5 kHz at 24 dB per octave Linkwitz-Riley Large independent networks on glass-epoxy PCBs High-purity copper wiring with Teflon® insulation Ultra-premium passive components. Silver solder
<b>Cabinet</b>	Compound constrained layer damped 2" thick walls Isolated, individually-optimized bass and head enclosures Extensive interlocked bracing. Tongue and groove joints Mirror-imaged matched pairs in fine architectural veneers Limited edition exotic veneers and high gloss finishes
<b>Connections</b>	Four gold-plated WBT binding posts with copper jumpers Bi-wire and bi-amp capable. Head unit cable included
<b>Included Bases</b>	Laser-cut solid steel bases including stainless steel spikes, machined hardware, and floor protectors Gold, silver, or black finishes
<b>Dimensions HWD</b>	Head cabinet 15.4 x 10.7 x 22.5" (390 x 272 x 572 mm) Bass cabinet 29.1 x 12.6 x 22.5" (740 x 320 x 572 mm) Assembled 47.0 x 12.6 x 22.5" (1194 x 320 x 572 mm)
<b>Weight Each</b>	252 lbs (115 kg). 346 lbs (157 kg) packed

Sapele Pommele

Tuscan Sycamore

Gloss Basalt

Gloss Titanium

Gloss Black

Rosewood

Natural Cherry

**Aerial Acoustics**  
100 Research Drive  
Wilmington, MA 01887  
USA

Tel: 978.988.1600  
Fax: 978.988.1661  
E-mail: [contact\\_us@aerialacoustics.com](mailto:contact_us@aerialacoustics.com)  
Web: [www.aerialacoustics.com](http://www.aerialacoustics.com)